

COVID-19, Paid Leave, and Unemployment



I am employed and still on the job and I need paid time from work*

Including self-employed, gig workers, and independent contractors



I am sick from COVID or under public health order to stay home

Federal Paid Sick Days

Up to 80 hours; Full pay up to \$511/day

Someone else in my household is sick from COVID

Federal Paid Sick Days

Up to 80 hours; 2/3 pay up to \$200/day

I need to care for my child who is out of school/childcare

Federal Paid Sick Days

Up to 80 hours; 2/3 pay up to \$200/day

Paid Emergency Leave

If you are caring for a child out of school/day care; Up to 12 weeks, up to \$200/day total \$12,000

I need to care for someone else in my household

Look into local and state paid sick days and paid family leave laws

Some states offer regular unemployment benefits if you lose part of your hours

I am still unable to work after using federally available time

Talk to your employer about potential accommodations

Apply for unemployment insurance if you must leave your job

I am working less because of COVID**

You may be able to use Unemployment Insurance to make up some or all of the difference

For states that don't, you can receive Pandemic Unemployment Assistance

Your employer may be able to enter into a worksharing agreement with your state unemployment office

In both cases, you are eligible for an additional \$600/week under Pandemic Unemployment Compensation until the week ending July 26, 2020



I don't have a job/ I don't have any hours**

I am a regular employee

Apply for regular state unemployment benefits

If you do not qualify for regular state unemployment benefits, you may be able to get Pandemic Unemployment Assistance

In both cases, you are eligible for an additional \$600/week under the Pandemic Unemployment Compensation until the week ending July 26, 2020

I've run out of regular and extended benefits

You will automatically transition to Pandemic Emergency Unemployment Compensation

13 more weeks can be covered

You can receive your state's unemployment benefits; they will be paid for by the federal government

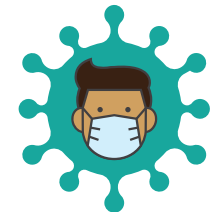
I am self-employed/contractor/gig worker or am otherwise not qualified for regular unemployment

If you are not eligible for regular state Unemployment Insurance, apply for Pandemic Unemployment Assistance

Your benefit will be at least 1/2 of your state's regular minimum payment. May be higher

Pandemic Unemployment Assistance is up to 39 weeks of leave

In both cases, you are eligible for an additional \$600/week under Pandemic Unemployment Compensation until the week ending July 26, 2020



These laws have some exceptions. Read our factsheets for details



*This program is for businesses of 500 or fewer; healthcare and emergency workers may not be covered; businesses of 50 or fewer may opt not to offer leave for school closures.

**Undocumented workers are not covered by these benefits.